

# 2020 Community Overview

A SOCIO-ECONOMIC PROFILE

## Town of Trochu

**POPULATION: 1,058**

### Median Age

Male	44.0
Female	45.8

**Number of Businesses:** 66 (2017)

**Permits Issued (2018):** 21

**Total Permit Value (2018):**  
\$11.4 million

### Average Household Income

**\$85,520**

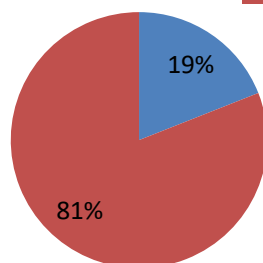
**Average After-Tax  
Household Income**

**\$73,533**

2015

### Property Assessments

■ Non-Residential  
■ Residential



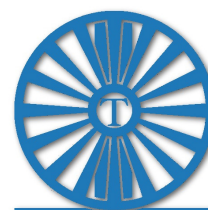
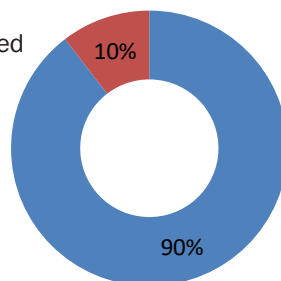
### In the Labour Force

**570**

Participation Rate

**67%**

■ Employed  
■ Unemployed



**TROCHU  
ALBERTA**



### Transportation & Logistics

Trochu is ideally located in South Central Alberta, with amazing accessibility. Adjacent to the second most used north-south highway in the province (Highway 21), 18 kms from the gorgeous Red Deer River Valley and with the CN Railway running on the east side of town. Calgary is 1-hour drive SW, Edmonton is 2 hours NW, Red Deer is 50 minutes NW and Olds is 40 minutes directly to the east.

**A proud member of**



**caep**  
CENTRAL ALBERTA  
ECONOMIC PARTNERSHIP  
*Thriving Business...Vibrant Communities*

**Total Households  
for Tenure  
420**

**Owned 76%  
Rented 24%**

### Average Household Consumption

Shelter	<b>\$18,270</b>
Food	<b>\$8,252</b>
Household operation & furnishings	<b>\$7,590</b>
Health care	<b>\$2,634</b>
Transportation	<b>\$12,619</b>
Recreation & Entertainment	<b>\$5,796</b>
Personal care & clothing	<b>\$4,910</b>
Child Care	<b>\$485</b>
Education & books	<b>\$1,592</b>
Miscellaneous expenditures	<b>\$2,182</b>
<b>Total</b>	<b>\$64,330</b>

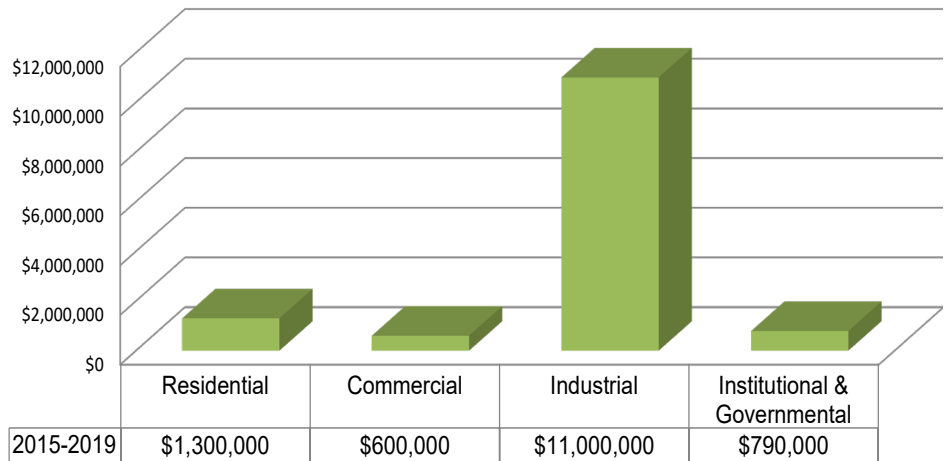
**Vehicle Registrations (2017)**

**2,015**

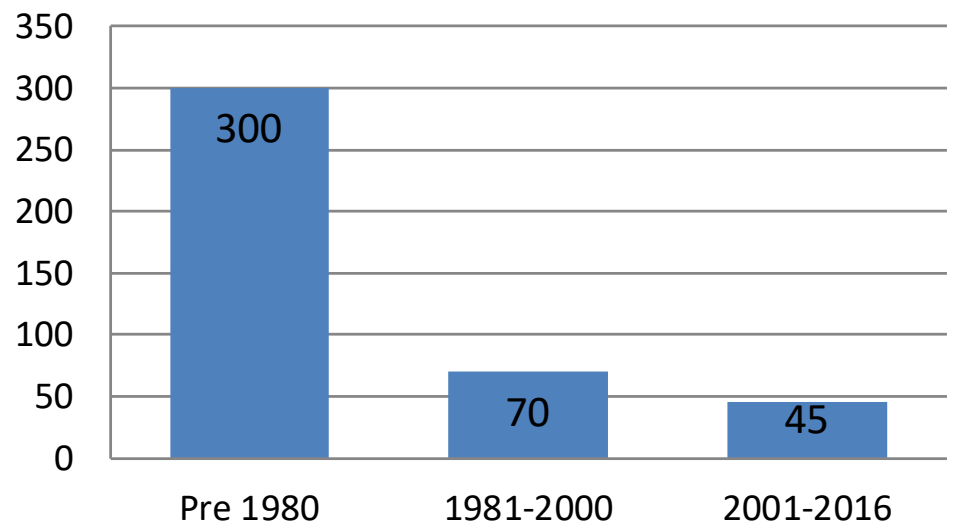
### Housing by Structure

Single Family	<b>330</b>
Multi-Family	<b>45</b>
Apartments	<b>5</b>
Movable Dwellings	<b>40</b>

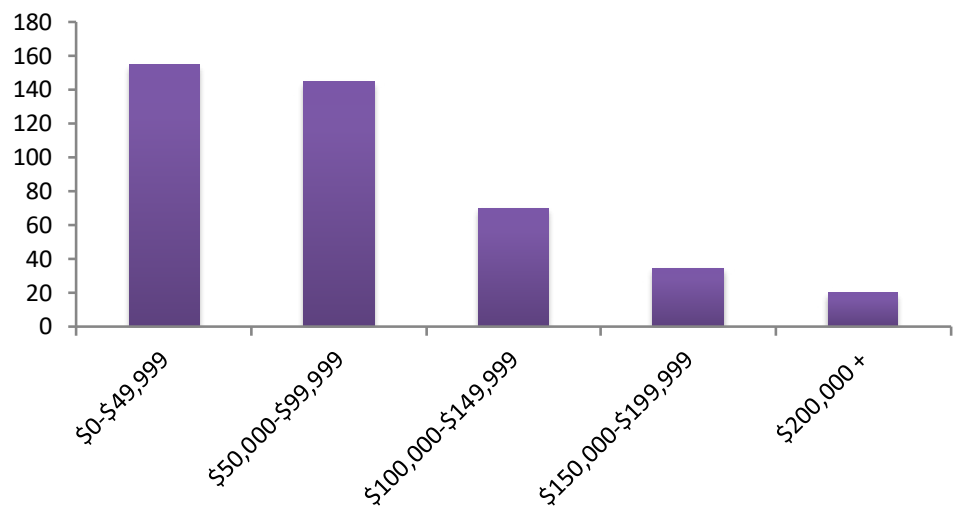
### 5-Year Average Building Permits by Category



### Occupied Private Dwelling by Period of Construction



### Number of Households by Income Group





## Quality of Life - Thrive in Trochu!

You'd be hard pressed to find a place jam packed with more community spirit than Trochu. Small town benefits with all the essential services and only 15 minutes from the stunning river valley - come taste the River Life! Trochu offers great recreation facilities, K – 12 modernized school, golf course, community fitness centre, beautiful green spaces, medical facilities, restaurants, shopping and much more!



**Trochu is home to the world's largest golf tee, which is over 12 meters (40 feet) tall!**

## Top Ten Industries

(number of jobs)

Construction	70
Manufacturing	55
Retail trade	55
Agriculture, forestry, fishing and hunting	45
Services other than public administration	45
Transportation and warehousing	40
Mining, quarrying, and oil and gas extraction	35
Finance and insurance	35
Public administration	35
Wholesale trade	30

## Occupations

(number of jobs)

Trades, transport and equipment operators and related occupations	170
Sales and service occupations	140
Management occupations	75
Manufacturing and utilities	60
Business, finance and administration occupations	40
Natural resources, agriculture and related production occupations	35
Art, culture, recreation and sport	15
Natural and applied sciences and related occupations	10
Health occupations	10
Education, law and social, community and government services	10

## Top Employers

Sunterra Meats

Town of Trochu

Trochu Motors

Cargill

Cervus Equipment Trochu

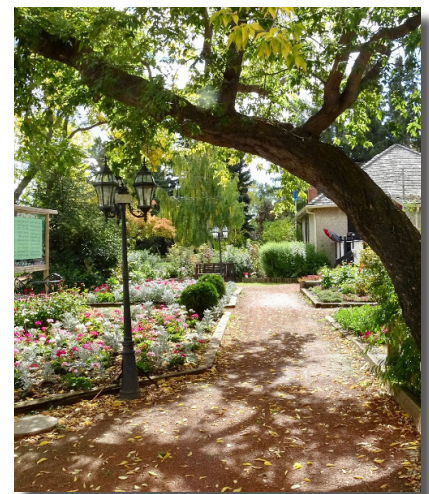
Viterra Trochu

Covenant Health

Golden Hills School Division #75

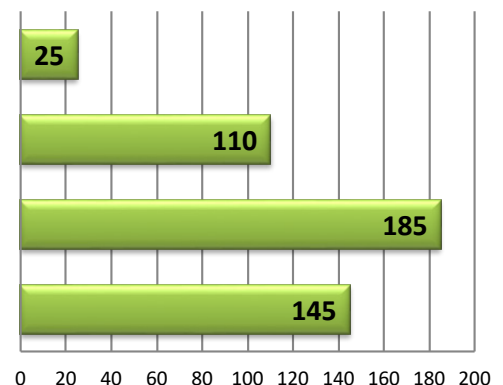
ATB Financial

Bank of Montreal



## Highest Educational Attainment (Ages 25-64)

University degree at bachelor level or above	25
Apprenticeship or trades certificate	110
Other Postsecondary below bachelor level	185
High School diploma or equivalent	145







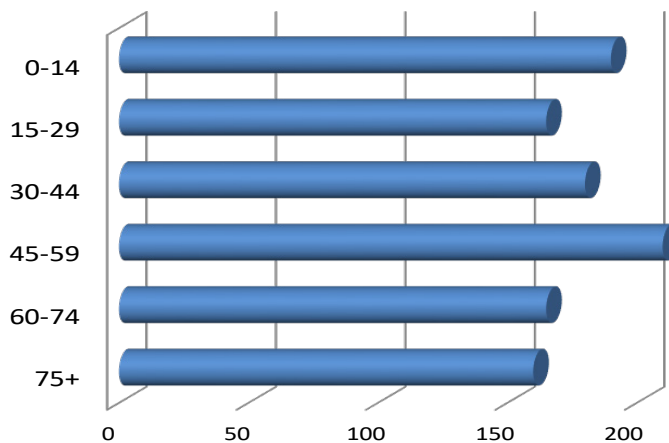
# 2020 Community Overview

A SOCIO-ECONOMIC PROFILE

## Invest in Trochu

Trochu is a GREAT place to invest in! Centrally located, forward-thinking (you won't find big city red tape here!), land and buildings available, no business license charges, reasonable corporate taxes, and other economic incentives. The Town of Trochu is always ready and willing to work with you, come talk to us!

## Population by Age Group



## Education (2017)

K-9 Enrollment

**193**

High School Enrollment

**72**

Post-secondary Enrollment

**65**

New Apprentices

**5**

(2015)



For more information, contact:

## Development Department

Ph: 403-442-3085

Email: [utilities@townoftrochu.ca](mailto:utilities@townoftrochu.ca)

[www.town.trochu.ab.ca](http://www.town.trochu.ab.ca)

Produced in partnership with



[www.centralalberta.ab.ca](http://www.centralalberta.ab.ca)

The data used to prepare this report has been sourced from the Alberta Regional Dashboard, Stats Canada 2016 Census and municipalities. The reference period is the calendar year 2015 for all Census income variables.

This report is for information purposes only and CAEP does not assume any responsibility or liability by providing it. While every effort has been made to control errors, users are advised to confirm any numbers before making decisions or assumptions based on the information in this document. Data prepared by Pinnacle Communication & Media Inc. on behalf of CAEP.

For more information about CAEP, contact:

Ph: 403-357-2237

Email: [info@caepalberta.com](mailto:info@caepalberta.com)